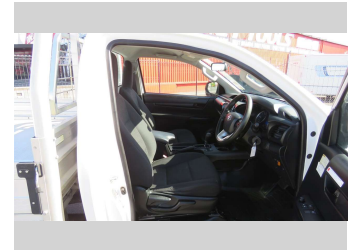
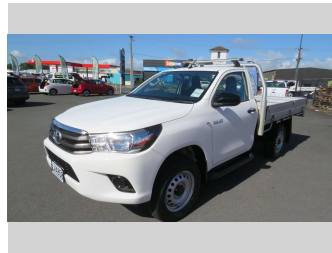
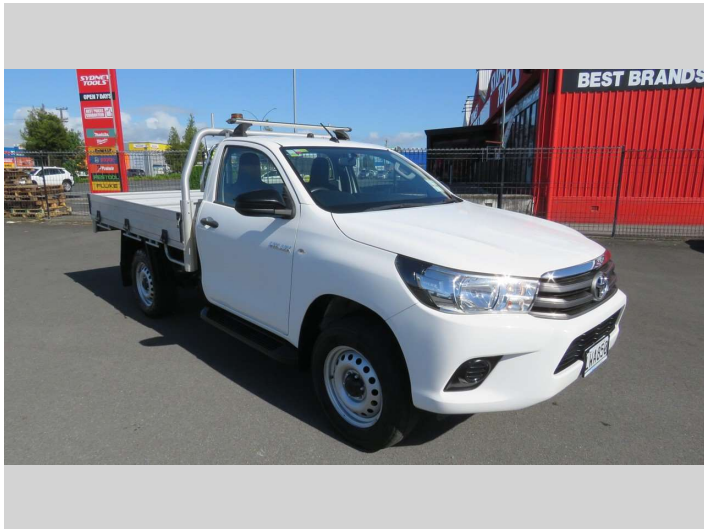


2018 Toyota Hilux SR TD SC/CC 2.8D/4WD



Purchase Price

Includes GST, Registration & Licensing

Auction

Buy the car you want with Finance Now

finance
NOW
Money your way

Confidence for the road ahead.

Ji JANSSEN
INSURANCE

Top features

- » 4WD/4x4
- » ABS Brakes
- » Air Bag(s)
- » Air Conditioning
- » CD(s)
- » Central Locking
- » Cruise Control
- » Electric Mirrors
- » Electric Windows
- » Power Steering
- » Remote Locking
- » Reversing Camera
- » Roof racks
- » Running Boards
- » Towbar
- » Turbo

Body Style

2 door, Ute

Odometer

47,011 km

Engine

2755 cc, Internal Combustion

Fuel Type

Diesel

Transmission

Auto, 4WD

Wheels

-

VIN

MR0KA3CB201125162

Interior

-

Safety



Based on 2025 UCSR rating for 15-19 models

Reg No.

LWA850

Ext Colour

White

History

NZ New, 1 owner

Seats

2 seats

CO2 Emissions

★ ★ ☆ ☆ ☆ ☆

238 grams/km

Energy Economy

★ ☆ ☆ ☆ ☆ ☆

**Annual fuel cost of \$3,950
10.3L per 100km**

Cost per year is an estimate based on diesel price of \$2.00 per litre and an average distance of 14000 km. Includes Road User Charges (RUC). Emissions and Energy Economy figures standardised to 3P WLTP.

Stock ID: 87591



Auto Auctioneers | Phone 07 849 6272 | Email
admin@autoauctioneersltd.co.nz
598 Te Rapa Road, Te Rapa, Hamilton 3200, New Zealand
www.autoauctioneers.co.nz